

GREE ELECTRICAL APPLIANCES TEST REPORT

Product: Bottom Cover

Technology Center

23th July, 2014

1, Product and Mold Introduction

Product: Bottom Cover

Material: ABS

Product weight: $134 \pm 3g$

(technology requirement)

Mold size: $450 \times 450 \times 352mm$

Mold weight: Around 450kg

Cavity: One

Machine type: BL120EK

Comparison: MA160G

(MA120G with the mold capacity of 410×410 can not produce the same product)



2, Test Statistics of BL120EK

Machine Model: BOLE BL120EK

Test date: 21th July, 2014

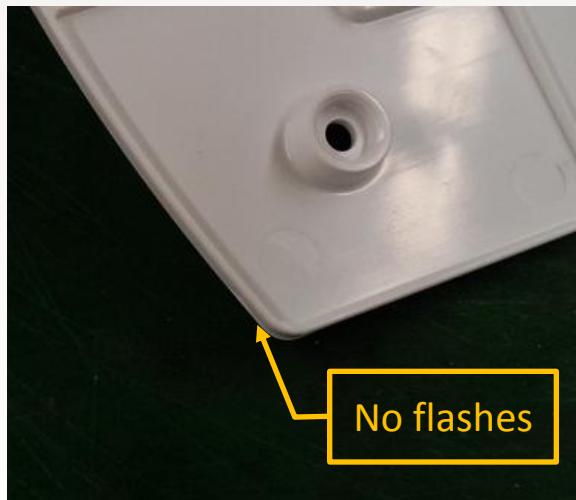
Test place: Shijiazhuang Gree Electrical Appliance Co., Ltd.

Test method: Select 10 pieces from the 30 products produced constantly from the machine



Weight 133.20g
Avenue 133.30g

number	Weight
11	133.94
12	133.85
13	133.43
14	133.14
15	133.21
16	133.02
17	133.03
18	133.04
19	133.14
20	133.21
Avenue	133.30
Max	133.94
Min	133.02
Repeat Accuracy	±0.35%



3. Haitian MA160G Test Situation

Machine Model: HT MA160G

Test date: 21th July, 2014

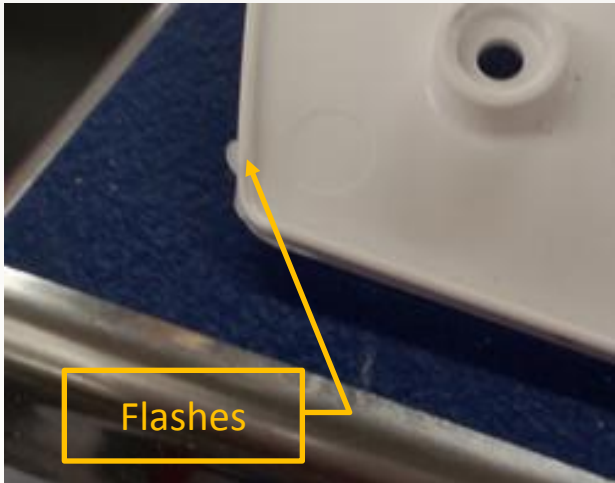
Test place: Shijiazhuang Gree Electrical Appliance Co., Ltd.

Test situation: Select 10 pieces from the 30 products produced constantly from the machine



Number	Weight
11	137.92
12	136.91
13	138.52
14	138.07
15	134.31
16	133.38
17	134.17
18	134.95
19	133.26
20	135.54
Avenue	135.70
Max.	138.52
Min.	133.26
Repeat Accuracy	±1.9%

Weight 137.6g
Avenue 135.70g





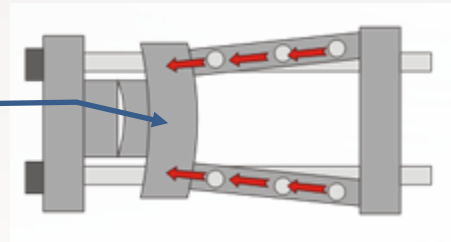
4. Test result and analyse

Recycle material

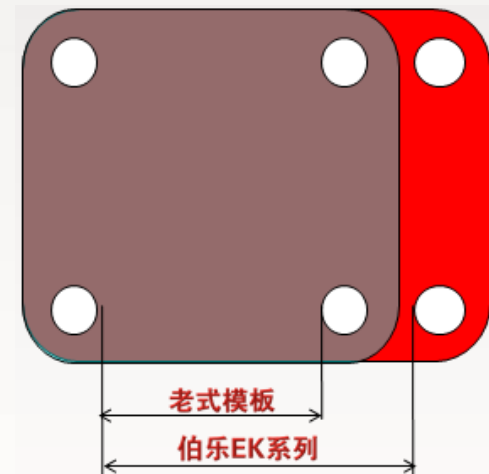
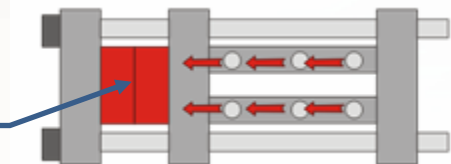
Test report comparison:

- 1、 THE FLASH OF BL120EK IS LESS THAN MA160G.
- 2、 THE WEIGHT OF PRODUCT FROM BL120EK IS 2.4 GRAM(AROUND 2%) LESS THAN MA160G.
- 3、 MOLD SIZE IS 450×450, BL120EK CAN PRODUCE, HOWEVER, IT NEEDS MA160G FROM OUR COMPETITOR.
- 4、 THE WEIGHT REPEAT ACCURACY FROM BL120EK IS 5 TIMES THAN MA160G (FOR YOUR REFERENCE)

HT MA/G SERIES MACHINE IS TRADITIONAL INCURVE CLAMPING STURCTURE. MOLD DEFORMED DUE TO THE DEFORMATION OF PLATEN.



BLEK SERIES IS THE OUTCURVE CLAMPING STURCTURE. THERE IS ALMOST NO DEFORMATION FOR THE MOLD.



BLEK LARGE MOLD CAPACITY DESIGN
 SUCH AS : BL120EK TIE BAR : 460×410
 MA120G : 410×410
 MA160G : 455×455